

# Pan American Inspection Conference 2024

August 22, 23 and 24, 2024  
Convention Center  
Villahermosa, Tabasco.  
México

## Guide To Lecture Presentations

## **TITLE OF THE PAPER OF THE PAN-AMERICAN INSPECTION CONFERENCE.**

*(Times New Roman, Bold, size 14) (single space line size 14)*

**First Author's Name** *(Times New Roman, Bold, size 10)*

Name of institution and address *(Times New Roman, size 9)*

e-mail, if any

*(single space line, size 10)*

**Second Author's Name** *(Times New Roman, Bold, size 10)*

Name of institution and address *(Times New Roman, size 9)*

e-mail, if any

*(single space line, size 10)*

**Abstract.** *The purpose of this paper template is to serve as a model of a typical paper to be published in the Proceedings of Pan- American Conference for inspection. The corresponding abstract should describe the objectives, the methodology and the main conclusions in no more than 200 words. It should not contain either formulae or mathematical deductions.*

*(Times New Roman, size 9)*

*(single space line, size 10)*

**Keywords.** *keyword 1, keyword 2, keyword 3, keyword 4, keyword 5.(up to 5) (Times New Roman, italic. size 9)*

*(single space line. size 10)*

**1. Introduction** *(Times New Roman, Bold, size 10)*

*(single space line, size 10)*

The *Pan-American Conference for inspection* proceedings will be published in a USB, using ADOBE PDF format.

The paper must follow these instructions, concerning the text format, figure and table qualities.

The manuscripts should only be submitted in English, French, Spanish or Portuguese. The Organizing Committee strongly recommends that the authors choose the Spanish or English language. If the paper is not typed in English, the author must include the title, the abstract and the keywords, written in English, after the reference list, at the end of the paper.

The manuscript must be typed in letter size paper, using the font Times New Roman, size 10, except for the title, the authors affiliation, the abstract and the keywords. Their sizes are indicated above.

The first page has the top margin equal to 3 cm and all the other margins (left, right, and bottom) are 2 cm. All other pages must be set with all margins equal to 2 cm.

The papers are limited to a maximum of 10 (ten) pages, including tables and figures.

The final PDF file must not exceed 500 KB.

When submitting the paper for the first time, the author names and affiliation, should be completely covered by a blank text box. Type the abstract code TRBXXXX, which was included in the abstract acceptance e-mail, in the blank text box.

***PLEASE, DO NOT USE PAGE HEADERS SINCE THESE AREAS ARE RESERVED TO THE EDITORS. DO NOT USE PAGE NUMBERS, THESE WILL BE ASSIGNED WHEN PUBLISHING THE CONFERENCE PROCEEDINGS. THESE INSTRUCTIONS MAY BE USED AS A TEMPLATE FOR MSWORD 2010 USERS.***

*(single space line, size 10)*

## 2. Text format

*(single space line, size 10)*

The text block that contains the title, the author name and affiliation, the abstract and keywords is indented 0.1 cm from the left margin and has a left border with line width equal to 2.25 points.

*(single space line, size 10)*

## 3. Section titles and subtitles

*(single space line, size 10)*

The section titles and subtitles must be typed with Times New Roman, size 10, bold style, and are left aligned. They must be numbered using Arabic numerals separated by points, using no more than 3 sublevels. One single line must be included above and below each section title/subtitle.

*(single space line, size 10)*

## 4. Body of the text

*(single space line, size 10)*

The body of the text is justified. Each first paragraph line is indented by 0.6 cm

The mathematical equations are left aligned and indented by 0.6 cm. Use Arabic numerals for the equation numbers, enclosed between parentheses, right aligned, as shown in Eq. (1). It is referred either as Eq. (1) in the middle of a phrase or as Equation (1) when used at the beginning of a sentence. One blank line must be included above and below each equation.

*(single space line, size 10)*

$$\frac{A}{B} = \frac{dy}{dx} * \frac{\partial y}{\partial x} \quad (1)$$

*(single space line, size 10)*

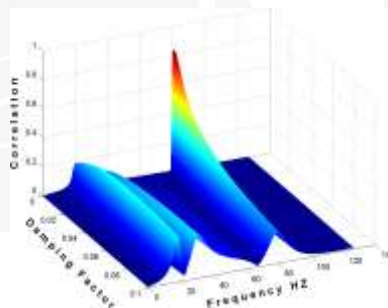
The equation symbols must be defined immediately before or after their first appearance. must be compatible with the body text font size. All symbol units must be expressed in the S.I. (metric) system.

The figure must be centered. It is referred either as Fig. (1) in the middle of a phrase or as Figure (1) when used at the beginning of a sentence. The figure caption is left aligned. The figure labels and annotations sizes must be compatible with the body text font size, and all units are expressed in the S.I. (metric) system. They should be placed as close as possible to their first citation in the text. Leave one blank line between figures and text.

*(single space line, size 10)*

Figure 1. Wavelets correlation coefficients.

*(single space line, size 10)*



Color figures and high-quality photographs can be included in the paper. To reduce the file size and preserve the graphic resolution, convert the image files to GIFF (figures with less than 16 color) or JPEG (for higher color density) formats, before inserting them in the paper.

The table must be center aligned. It is referred either as Tab. (1) in the middle of a phrase or as Table (1) when used at the beginning of a sentence. The table caption is left aligned and located immediately above the table. The table text and annotations sizes must be compatible with the body text font size, and all units are expressed in the S.I. (metric) system. Units are to be included only in the first line labels and/or first column labels, as appropriate. The tables should be placed as close as possible to their first reference in the text. Leave one blank line between table, its caption and text. The table border style is free. Examples are presented in Tab. (1) and Tab. (2).

*(single space line, size 10)*

Table 1. Experimental results for flexural properties of CFRC-4HS and CFRC-TWILL composites. Span/depth ratio = 35:1. Average results of 7 specimens.

*(single space line, size 10)*

Composite Properties	CFRC-TWILL	CFRC-4HS
Flexural Strength (MPa)	20 ± 10	180 ± 15
Flexural Modulus (GPa)	57.0 ± 2.8	18.0 ± 1.3
Mid-span deflection at the failure stress (mm)	2.15 ± 1.90	6.40 ± 0.25

*(single space line, size 10)*

The captions of figures and tables should not be longer than 3 lines. The second and third lines of a caption should be left indented as shown in Tab(1), above.

*(single space line, size 10)*

Table 2 - Properties after processing

*(single space line, size 10)*

Processing type	Property 1 (%)	Property 2 (µm)
Process 1	40.0	22.7
Process 2	48.4	13.9
Process 3	39.0	22.5
Process 4	45.3	28.5

*(single space line, size 10)*

A reference is cited using the following formats: Bordalo et al (1989), shows that the body..., or: Available results (Coimbra, 1978; Clark, 1986 e Sparrow, 1980), show that the beam stiffness values ...

Acceptable references include journal papers, numbered papers, dissertations, thesis, published conference proceedings, preprints from conferences, books, submitted papers (if the journal is identified), and private communications.

*(single space line, size 10)*

## 5. Acknowledgement

*(single space line, size 10)*

This optional must be placed before the reference list.

## 6. Reference list

*(single space line, size 10)*

The reference list is a new subtitle, named References, located at the end of the paper.

Each reference first line is left aligned; all other lines must be indented by 0.6 cm from the left margin. All references that are included in the reference list must be referred at the body text.

References must be listed in alphabetical order, according to the last name of the first author. See the following example:

*(single space line, size 10)*

### 7. References

*(single space, size 10)*

Bordalo, S.N., Ferziger, J.H. and Kline, S.J.,1989, “The Development of Zonal Models for Turbulence”, Proceedings of the 10th Brazilian Congress of Mechanical Engineering, Vol.1, Rio de Janeiro, Brazil, pp. 41-44.  
Coimbra, A.L., 1978,” Lessons of Continuum Mechanics”, Ed. Edgard Blücher, S.Paulo, Brazil, 428 p.  
Clark, J.A.,1986, Private Communication, University of Michigan, Ann Harbor.

Soviero, P.A.O. and Lavagna, L.G.M.,1997, “A Numerical Model for Thin Airfoils in Unsteady Motion”, RBCM-J. of the Brazilian Soc. Mechanical Sciences, Vol.19, No. 3, pp. 332-340.

Sparrow, E.M., 1980, ”Forced Convection Heat Transfer in a Duct Having Spanwise-Periodic Rectangular Protuberances”, Numerical Heat Transfer, Vol.3, pp. 149-167.

*(single space line, size 10)*

### 8. Copyright Notice

The author is the only responsible for the printed material included in his paper.